

Wallshell Shield™

CATALOG - v6.3
www.wallshell.com





Wallshell Shield™

The source of magnificence, the power of endurance, and the accent of individuality, Wallshell, with its wide-range of textured and color coated façade panels, provides you with an endless inspiration, a realization of architect's original vision and a comprehensive and versatile solution for your creative individuality.



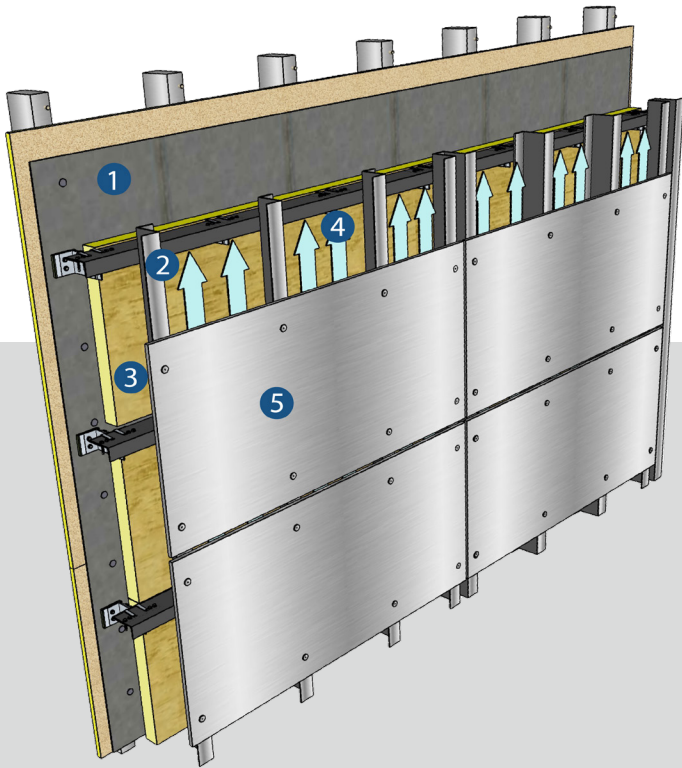
Wallshell Shield

Contents

Back-ventilated Rainscreen System	5
Advantages	6
Wallshell V-Shield™	7
RV Anchoring System	9
Wallshell U-Shield™	11
CG Anchoring System	12
GH Anchoring System	15
Shield™ Textures and Colors	17
Ceramicshell™ Series	19
Metalshell™ Series	21
Fabricshell™ Series	23
Granitedshell™ Series	25
Splendidshell™ Series	27
Pearlshell™ Series	29

Back-ventilated Rainscreen

The back-ventilated rainscreen system designed for rainscreen cladding applications with rear ventilation, they combined with each other to become the most reliable system. This cladding system not only effectively protects the building and its structure from the elements for a long time, but it also reduces humidity and the air circulation optimizes the efficiency of insulation. Therefore, problems such as molds and fungi do not occur.



- 1. Support Structure
- 2. Sub Frame
- 3. Thermal Insulation Layer
- 4. Ventilated Cavity
- 5. Wallshell Shield™ Panel



Advantages

- No compromise to architect visions in either granite or modern metallic facade solution
- Durable fiber cement material and marine-grade corrosion resistant anchors
- Anti-UV organic coating materials with 15-year coat no discoloration warrantee
- Make no difference in appearance from natural granite or metal materials
- Almost no weather constraints for on-site panel installation
- Extra strength to resist higher wind load comparing to most of sidings and facade panels
- Cost effective comparing to natural granite and aluminum sheets, plus easy to mount
- High quality finish in strictly controlled manufacturing environment

Wallshell V-Shield™

Wallshell V-Shield™ panel can be face fixed using rivet or panel anchor for metal support frames. All anchors are available with colour match heads to blend in with the panel.



Standard Sizes

- 1220 x 406mm(48" x 16")
- 1220 x 488mm(48" x 20")
- 1220 x 610mm(48" x 24")
- 1220 x 812mm(48" x 32")
- 2440 x 406mm(96" x 16")
- 2440 x 610mm(96" x 24")
- 2400 x 1220mm(96" x 48")

Other Properties

Thickness(mm)	Thickness(inch)	Panel Unit Weight(kg/m²)	Panel Unit Weight(lb/sqft)
8	5/16	13.1	2.6
9	23/64	14.8	2.9
10	25/64	16.4	3.3
12	15/32	19.7	3.9

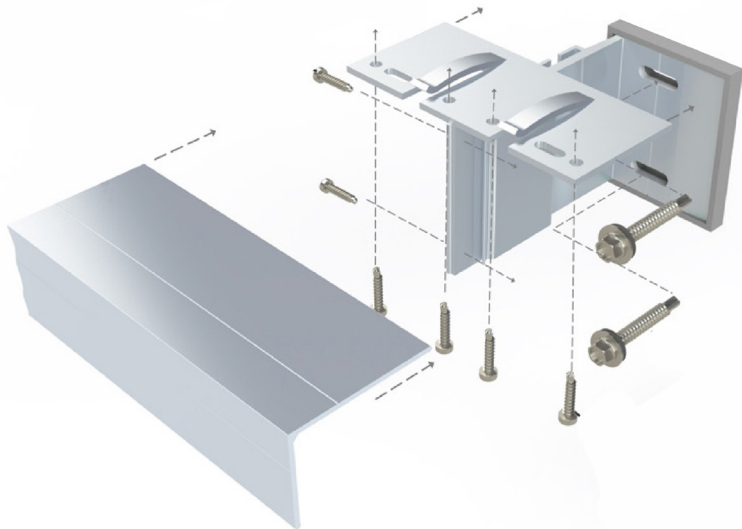


RV Anchoring System

Wallshell RV visible anchoring system consists of the color coated rivets or Panel Anchor and metal support frames, in an engineered arrangement specifically for V-Shield™ Panels. The color matched rivets to anchor our V-Shield™ panels onto marine-grade corrosion resistant aluminum metal support frames makes this system much simpler, more reliable and stable in its performance, and, the most important, easier for customer to cut on-site and install.



- 1. Bracket
- 2. Adaptor
- 3. Adoptor to Bracket Fastener
- 4. L-profile Extrusion
- 5. Substrate Fastener
- 6. Extrusion to Adaptor Fastener



D15 Stainless 316 Rivet
Diameter: 5mm
For max build up to 22mm



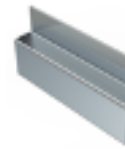
D16 Aluminum Rivet
Diameter: 5mm
For max build up to 21mm



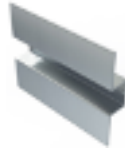
D12 Self-Drill Panel Anchors
Diameter: 5.3mm
For max build up to 40mm



L12 Self-Drill Panel Anchors
Diameter: 5.5mm
For max build up to 15mm



Aluminum Z-profile Extrusion
25mm Zed 2.4x45/30mm
40mm Zed 2.4x55/30mm



Aluminum Hat-profile Extrusion
25mm Hat 2.4x43/35mm
40mm Hat 2.4x53/35mm



Aluminum T-profile Extrusion
2.5x40x100mm; 2.5x60x80mm
2.5x60x100mm; 2.5x60x120mm
2.5x60x140mm



Aluminum L-profile Extrusion
2.5x60x40mm



Single L-profile Bracket
2x6.5mm Slot
For steel or wood substrate



Double L-profile Bracket
3x6.5mm Slot
For steel or wood substrate



Single L-profile Bracket
1x11 Slot
For concrete or CMU substrate



Double L-profile Bracket
3x11mm Slot
For concrete or CMU substrate

Wallshell U-Shield™

Wallshell U-Shield™ panels can be hidden fixed using undercut or hidden panel anchor for metal support frames. The undercut and hidden panel anchor is secured in the rear of the panel in specially drilled holes.



Standard Sizes

- 1220 x 406mm(48" x 16")
- 1220 x 488mm(48" x 20")
- 1220 x 610mm(48" x 24")
- 1220 x 812mm(48" x 32")
- 2440 x 406mm(96" x 16")
- 2440 x 610mm(96" x 24")
- 2400 x 1220mm(96" x 48")

Other Properties

Thickness(mm)	Thickness(inch)	Panel Unit Weight(kg/m²)	Panel Unit Weight(lb/sqft)
9	23/64	14.8	2.9
10	25/64	16.4	3.3
12	15/32	19.7	3.9
15	19/32	24.6	4.9

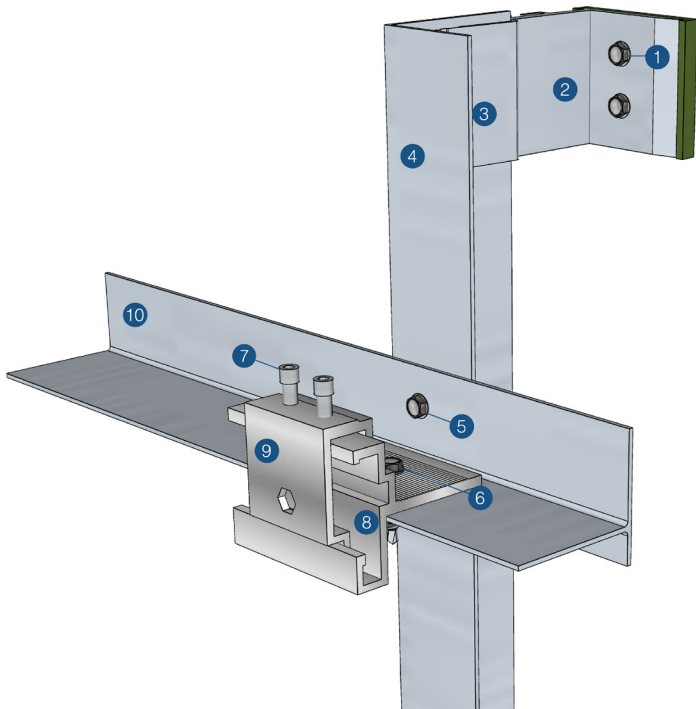


CG Anchoring System

Wallshell CG concealed anchoring system consists of the undercuts or hidden panel anchor, CG-profile clips sets, and metal support frames in an engineered arrangement specifically for U-Shield™ Panels. It serves as a horizontal anchoring system on the structural extrusion designed specifically for U-shield™ to address the system wind load safety, fire safety and thermal performance.



- 1. Substrate Fastener
- 2. Bracket
- 3. Extrusion to Bracket Fastener
- 4. L-profile Extrusion
- 5. Rail to Extrusion Fastener
- 6. Clip to Rail Fastener
- 7. Adjuster
- 8. G-profile Clip
- 9. C-profile Clip
- 10. T-profile Rail



Undercut 1
Anchoring depth: 7, 9, 10mm



Undercut 2
Anchoring depth: 7, 9, 10mm

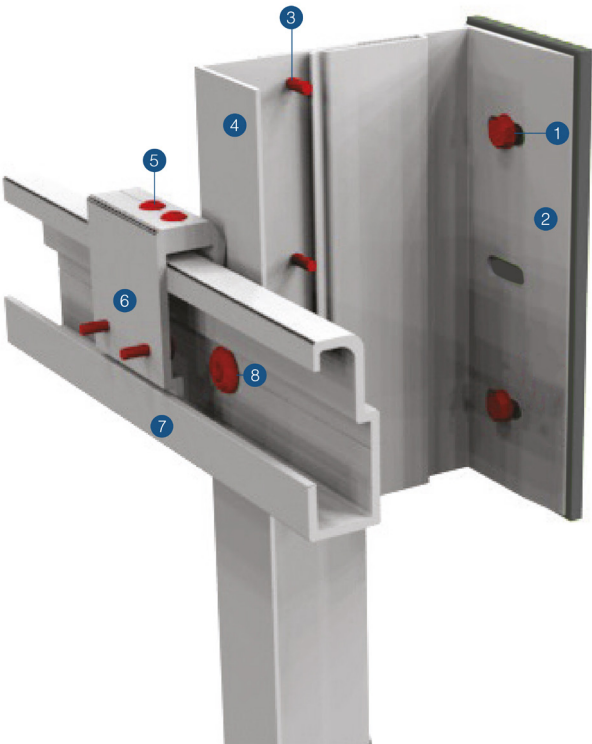


Aluminum C-profile Clip
1 Keil anchor hole

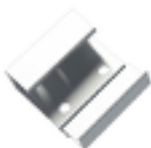


Aluminum G-profile Clip

- 1. Substrate Fastener
- 2. Bracket
- 3. Extrusion to Bracket Fastener
- 4. L-profile Extrusion
- 5. Adjuster
- 6. C-profile Clip
- 7. C-profile Rail
- 8. Rail to Extrusion Fastener



Hidden panel anchor
For panel thickness:
10mm, 12mm



Aluminum C-profile Clip
2 round anchor hole 6.5mm



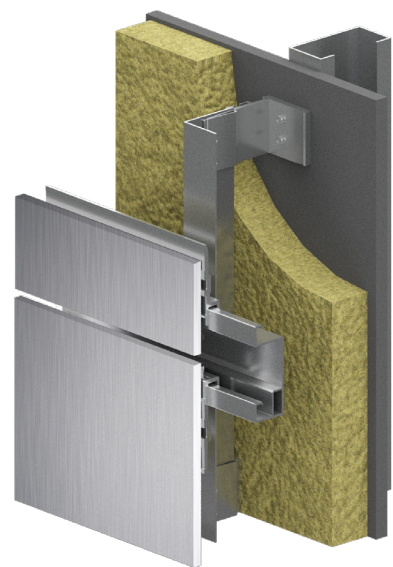
Aluminum C-profile Clip
3 round anchor hole 6.5mm



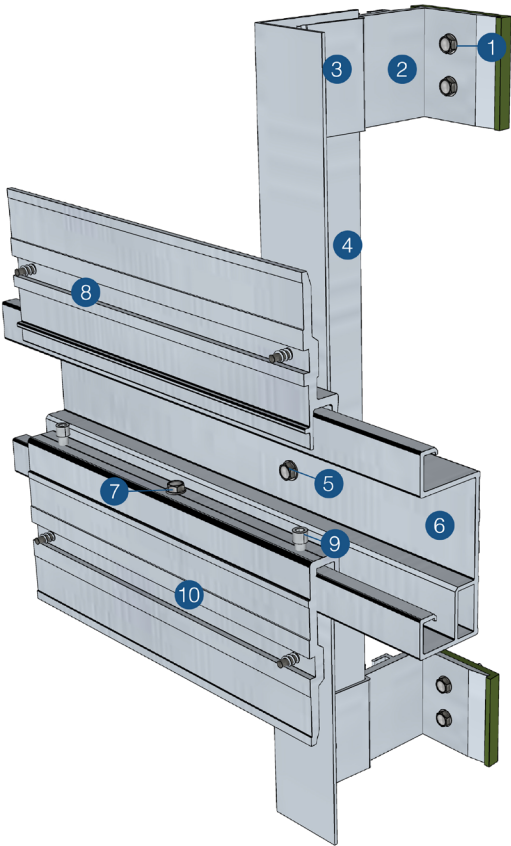
Aluminum C-profile Rail

GH Anchoring System

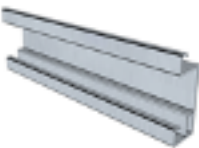
Wallshell GH concealed anchoring system consists of the hidden panel anchor, H&J-profile clips, G-profile Rail and metal support frames in an engineered arrangement specifically for Wallshell U-Shield™ Panels.



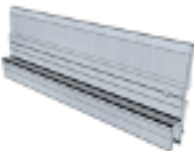
- 1. Substrate Fastener
- 2. Bracket
- 3. Extrusion to Bracket Fastener
- 4. L-profile Extrusion
- 5. Rail to Extrusion Fastener
- 6. G-profile Rail
- 7. Tighten Fastener
- 8. H-profile Clip
- 9. Adjuster
- 10. J-profile Clip



Hidden panel anchor
For panel thickness:
10mm, 12mm



Aluminum C-profile Rail



Aluminum H-profile Clip
2 round anchor hole 6mm



Aluminum J-profile Clip
2 round anchor hole 6mm

Shield™ Textures and Colors - the Endless Variations

As natural as granite or as shining as metals, Wallshell's distinctive powder-coated fiber cement panels have been a leading brand for decades in the cladding industry. Its unique natural look and timeless beauty provide an exciting and noble expression to every building. The special coating also shows strong scratch resistance and offers lasting defense against graffiti. Wallshell has taken all that is great about fiber cement and engineered it into the magnificent rain screen and weather barrier cladding systems that stand out in the construction world.



Ceramicshell™



Texture: Satin

Customized Color: Upon Request.

The Ceramicshell™ color series use high performance fluoropolymer powders to achieve the durability of colors and gloss. With satin grade texture, its various distinctively pigmented finishes can give the façade a modern and avant-garde expression without any color limitations.

110 Ceramic White	115 Porcelain White	130 Pearl White
150 Ivory White	201 Natural Beige	204 Light Tan
205 Light Brown	210 Golden Brown	305 Bright Orange
505 Bronze Gold	515 Clay Brown	535 Brick Red



555 Dark Red	615 Slate Gray	640 Dim Gray
650 Fossil Gray	660 Ash Gray	

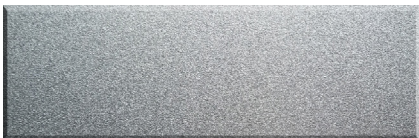
Metalshell™



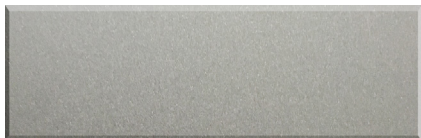
Texture: Satin

Customized Color: N/A

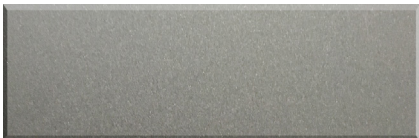
The Metalshell™ color series are Wallshell unique pigmented finishes. The selected metallic colors are coated with the super durable powders to achieve required performance as well as real metal expression, such as steel, coper, aluminum, silver or gold. These color series are usually selected by architects for high value buildings.



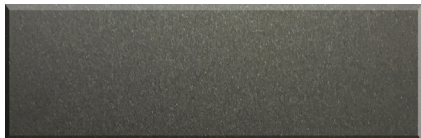
M10 Sliver Flash



M15 Alum Flash



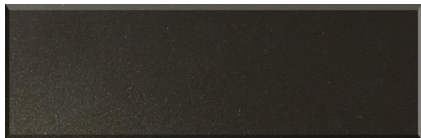
M30 Steel Flash



M40 Iron Flash



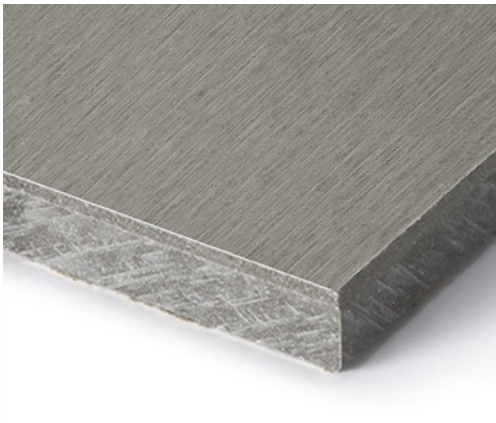
M50 Gold Flash



M70 Titanium Flash



Fabricshell™



Texture: Matte, Fabric
Customer Color: N/A

The Fabricshell™ color series create another noble and fabric-like expression in coating finishes. Characterized by a sanded surface without any pigmented coating, it naturally expresses the raw texture of the core fiber cement material.

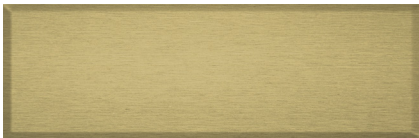
It is its through-colored facade material that displays a strong scratch-resistance and UV-resistance throughout its life cycle. It also exhibits a high resistance to graffiti, stain and acid-base compounds and advantage of easy cleaning when contaminated.



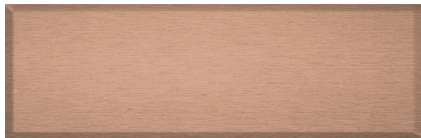
F20 Gray Hill



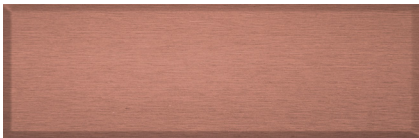
F35 Volcanic Sand



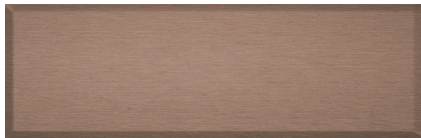
F40 Gold Desert



F50 Sun Valley



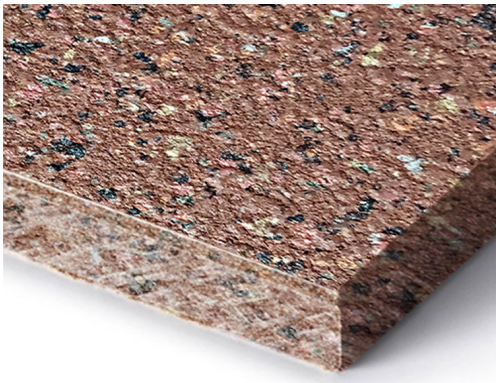
F55 Salt Lake



F59 Raw Sienna



Graniteshell™



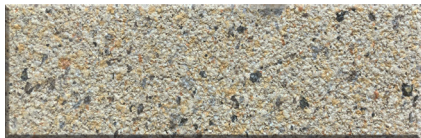
Texture: Bush-Hammered, Flamed, Matte

Customized Color: Can be identical with any natural granite provided by customer.

The Graniteshell™ color series are Wallshell unique pigmented finishes. With all the coating powders resourced from natural materials, its finishing displays an expression undistinguishable from natural granite. It also shows super strong UV-resistance throughout its life cycle, as well as a high resistance to graffiti, dust and acid-base compounds. It can be easily cleaned with an aqueous cleaner if contaminated.



G05 Mixed Rice



G08 Mixed Quinoa



G12 Brown Rice



G15 Yellow Sesame



G20 Mixed Grain



G30 White Sesame



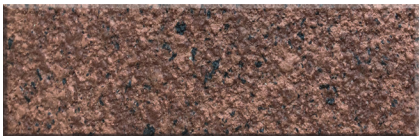
G35 Blue Sesame



G40 Gray Sesame



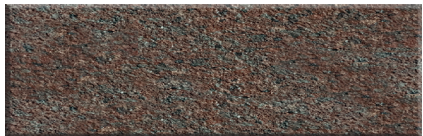
G45 Rice Bran



G50 Grain Sorghum



G55 Red Sorghum



G60 Dark Chestnut



G70 Rye Seed



G75 Coffee Rice



G80 Dark Sesame



G85 Black Quinoa

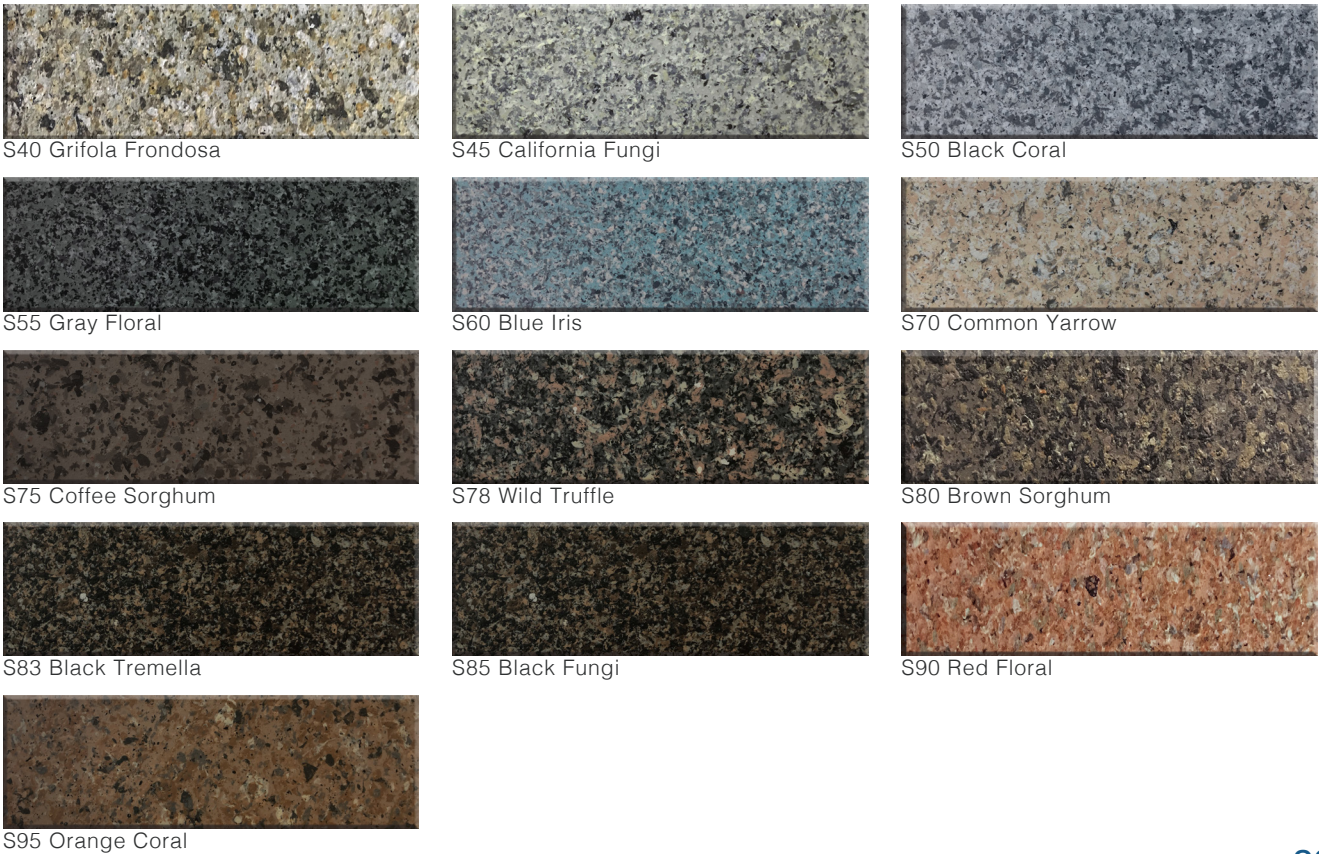
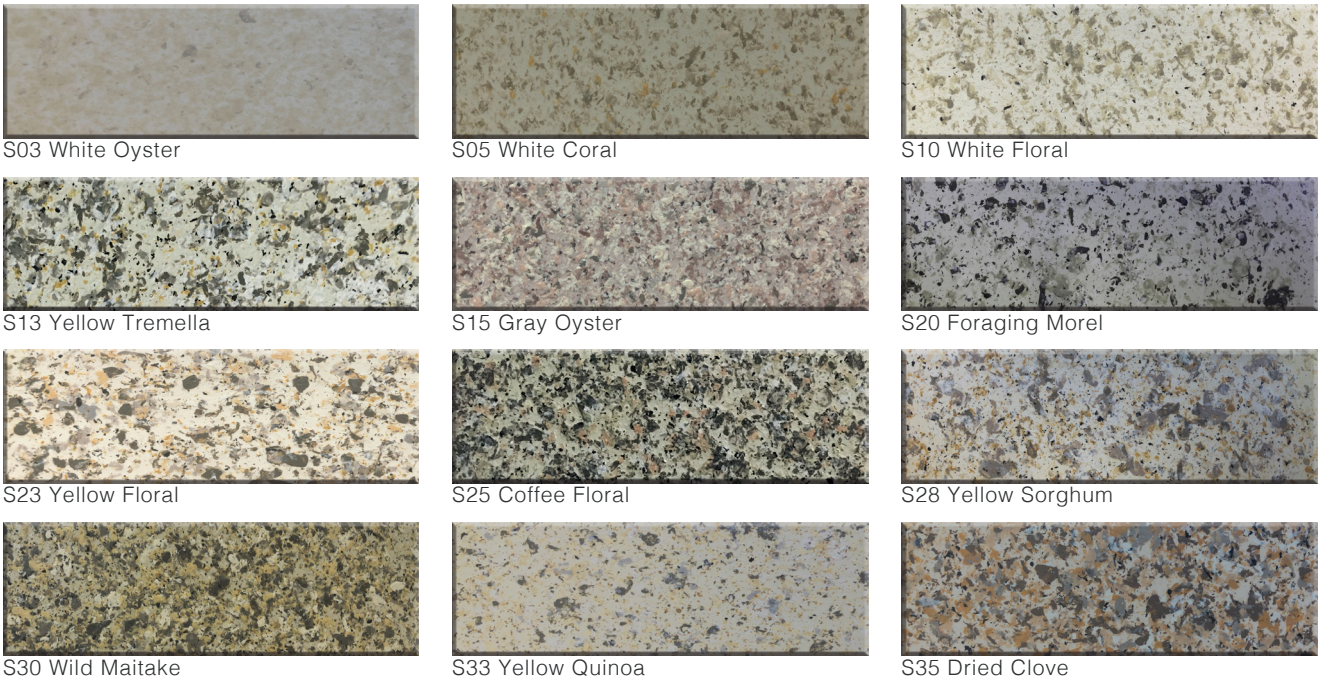
Splendidshell™



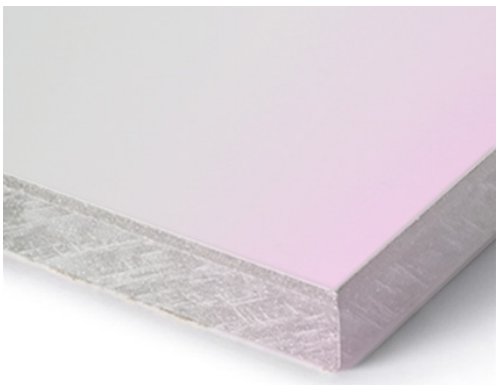
Texture: Matte

Customer Color: Upon Request

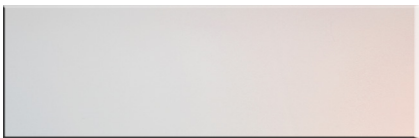
The Splendidshell™ color series, additional to its smoother surface than the Graniteshell™ series, can add as much as any imagination of flaky and chipped color effect to the pigmented finishes. It displays a super strong UV-resistance throughout its life cycle. It also shows a high resistance to graffiti, dust and acid-base compounds and advantage of easy cleaning when contaminated.



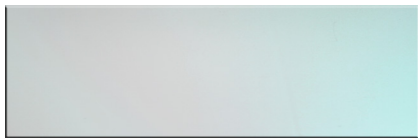
Pearlshell™



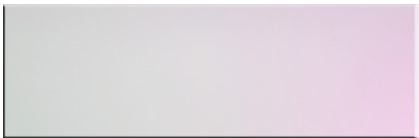
Texture: Satin
Customer Color: N/A
The Pearlshell color series are Wallshell distinctive pigmented finishes by adding pearl powder to achieve façade unexpected color illusive effect.



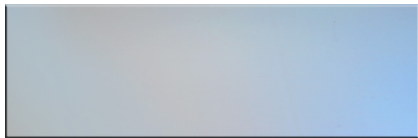
P10 Chameleon Apricot



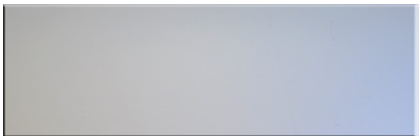
P20 Chameleon Cyan



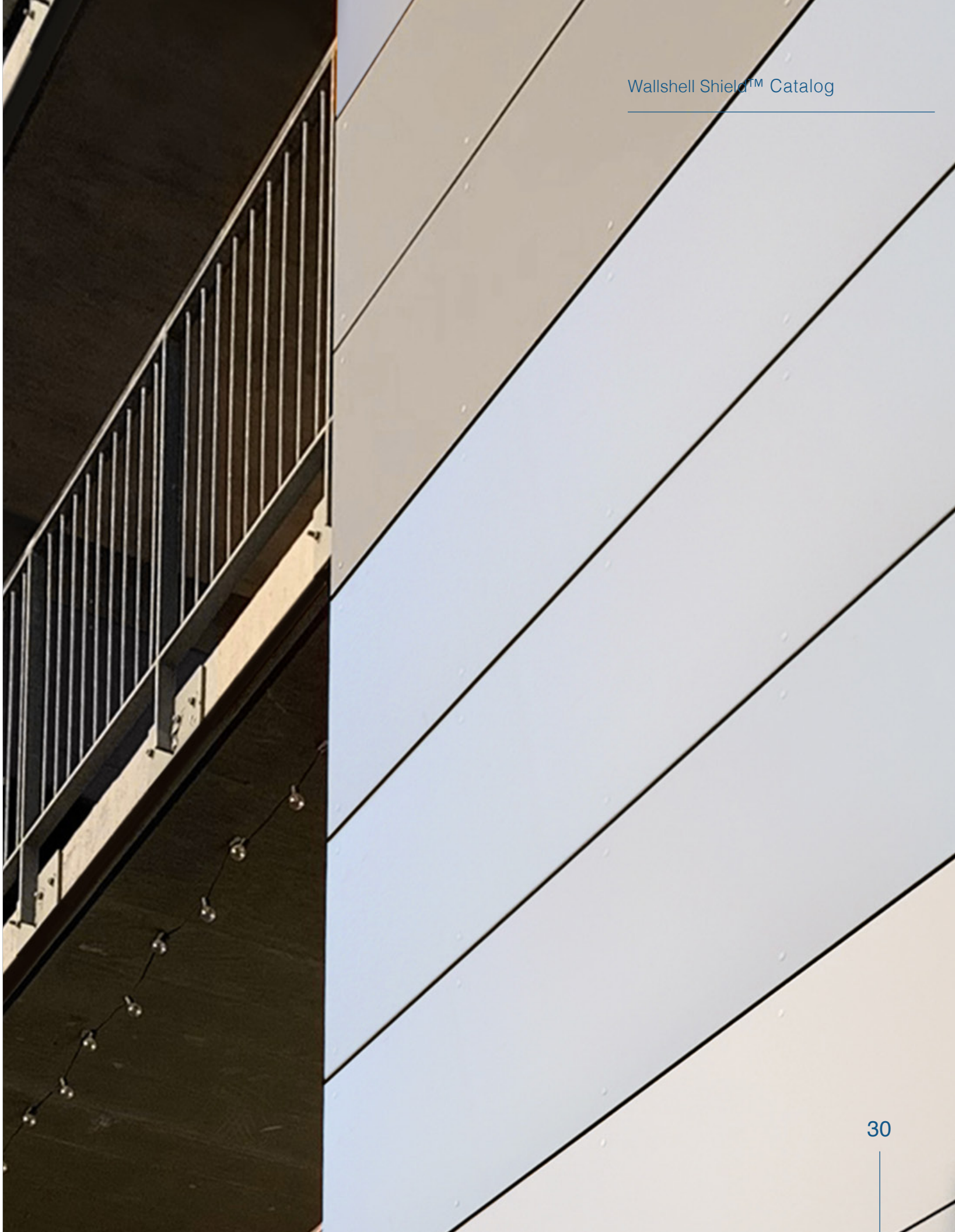
P30 Chameleon Magenta



P40 Chameleon Blue



P50 Chameleon Indigo



Wallshell Shield™
CATALOG
September 28, 2020



Walpanel Inc.
888-998-4611
www.wallshell.com